

The background of the image features four abstract 3D sculptures made of white paper, positioned in the corners. Each sculpture is a complex, layered structure of cut and folded paper, creating various geometric and organic forms. The top-left sculpture has a curved, bowl-like base with vertical ridges. The top-right sculpture features a prominent, curved, shell-like element. The bottom-left sculpture consists of several flat, rectangular pieces of paper layered and angled. The bottom-right sculpture is a large, complex structure with multiple layers and sharp, angular folds. The entire scene is set against a dark, solid background.

CINDYLUDLAM.COM

Student and Gallery Work

Cindy Ludlam

Gallery/Curatorial Work

Emmaline Payette
"Tree\$"



SEW FOR PEACE: Fostering compassion, empathy, and understanding one stitch at a time.

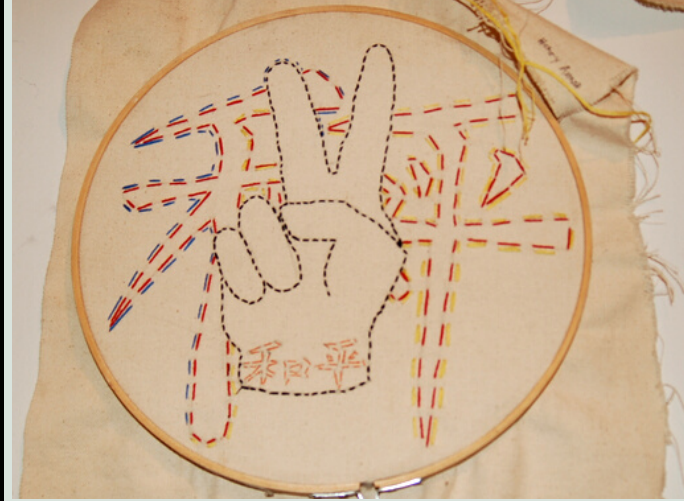
While working with fabric and sewing are familiar to some, most high school students and many college students are not familiar with the history or the experience of working with embroidery and needlework. Those who are familiar often view embroidery art in a negative light. This medium is rarely seen as having the potential to bring about a social change or capable of provoking a strong emotion.

As we investigate the culture of traditional embroidery and needlework creation, we understand women as agents of social change. The making of this art form was often communal, collaborative, or both. Through shared dialogue, these happenings gave birth to social change. The time these women spent together connected women through many centuries and cultures thus strengthening community.

This project aims to help students across the country take a few moments out of their day to reflect, sew for peace, and explore contemporary approaches to embroidery art and community building. By participating in a national sewing for peace campaign that culminates in a group show I believe we can explore the ways in which young men and women deal critically and creatively with reality and discover how to participate in the transformation of their world.

By taking time out of our day to engage in a peaceful sewing process and talking about the project, we can explore the shared qualities of our interconnected lives.

[READ MORE](#)



The Broad Spectrum Project:

The exhibit features photographs Chalmers took while collaborating with the Camphill Special Schools in Phoenixville Pennsylvania, a residential school for children and young adults with profound Autism and other disabilities.

"I have been going to the Camphill Special Schools for over a year and a half documenting the life at this amazing school," said Chalmers. "My passion is to photograph people of all ages with autism."

Chalmers will use proceeds from the show to purchase 18 to 20 point and shoot cameras for the students living on the young adult campus of the Camphill Special School, fund her visits to Camphill, and give back to the charity Autism Speaks.

[READ MORE Boston Globe](#)



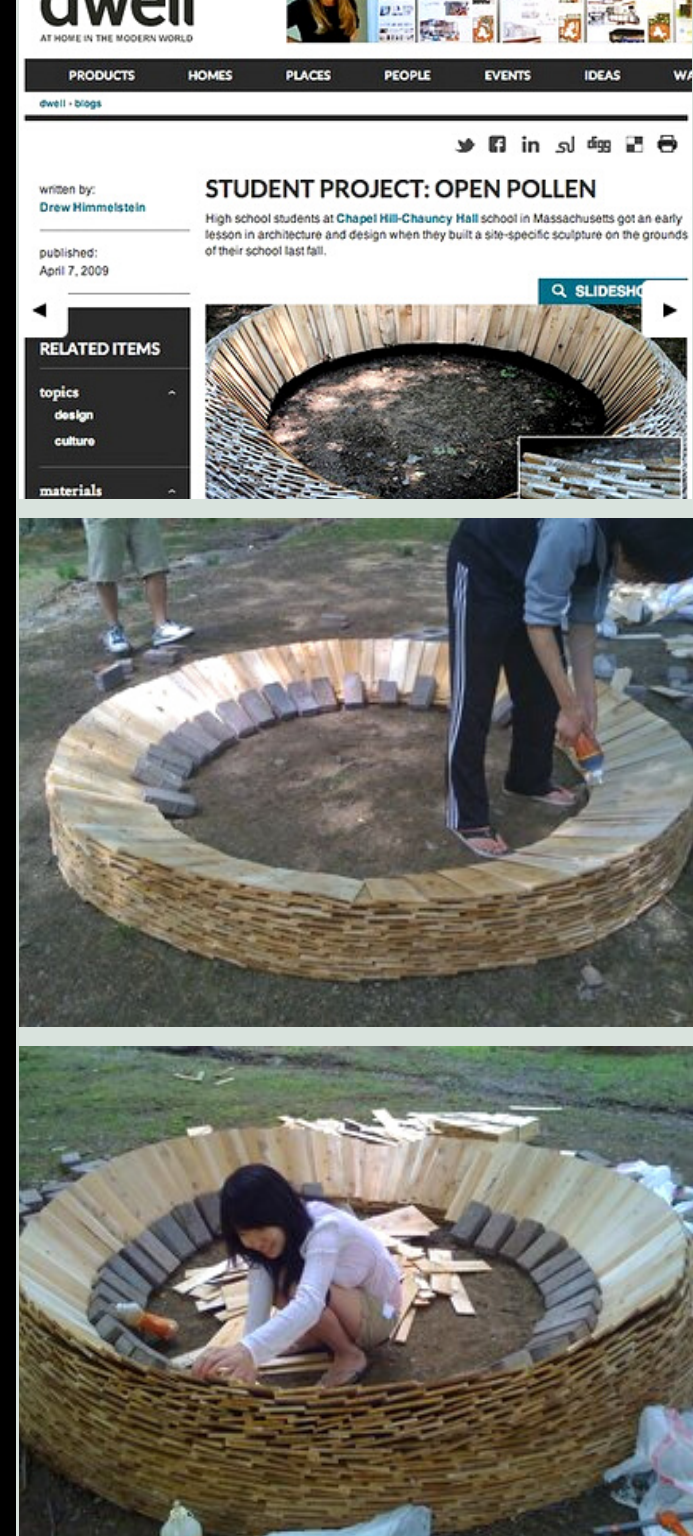
OPEN POLLEN

"High school students at Chapel Hill-Chauncy Hall School in Massachusetts got an early lesson in architecture and design when they built a site-specific sculpture on the grounds of their school last fall."

The piece, called "Open Pollen," is a low, open spiral made of layered flat wooden shingles that resembles a slice of honeycomb. The four students in Cindy Ludlam's Advanced 3D design class aimed to echo both the natural surroundings and the native architecture of Waltham, Massachusetts, in their choice of building material, cedar siding tiles. Cedar siding is a common feature of Waltham homes, and the wood panels reflect the tree-studded campus. Cedar is also non-toxic, which will keep the sculpture from damaging the soil beneath it even after time and weather have worn it in.

"We were trying to blur the lines between what is handmade and what is prefab," Ludlam said. The students experimented with illustration, digital drawing and computer animation to design their work. They had to alter their original design when their model wouldn't stand up by itself. Now the sculpture stands (successfully) at nine feet in diameter and eighteen inches high, by the front entrance to the school.

READ MORE on Dwell

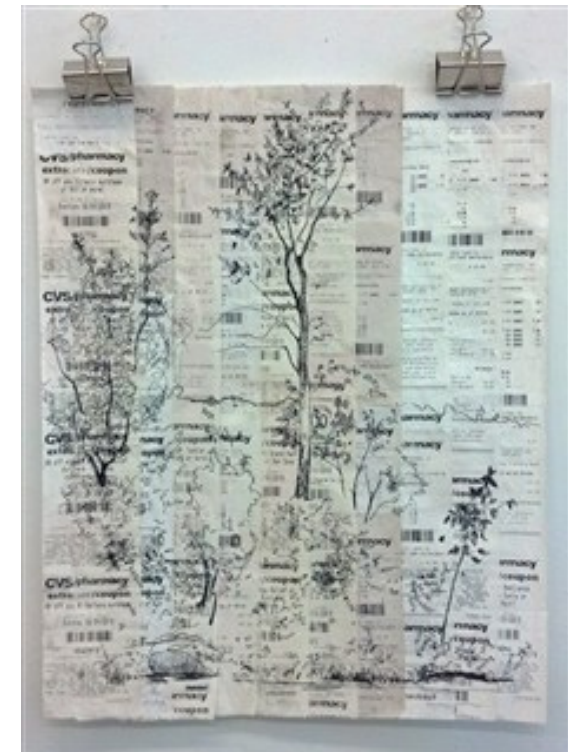


Tree\$

Emmaline Payette is an emerging artist from the Boston-area. Her work creates a conversation about cultural systems, nature, and the current state of our environment. She works in painting, drawing, and installation. Payette approaches her artistic practice with sensitivity to environmental impact and sustainability. Through her art, she aims to invoke compassion for the natural landscape and hopes to inspire thinking about one's own relationship with the environment.

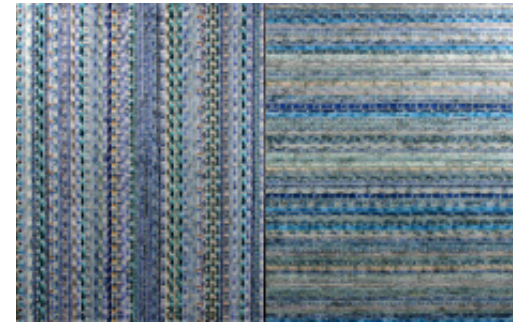
Payette began painting and exhibiting work at a young age, and in recent years exhibited in Rockport, Provincetown, Dedham, and Braintree, Massachusetts; Upstate New York; and Brittany, France. In August 2013 she was a resident at Vermont Studio Center. In 2010 Payette studied painting and drawing at The School of the Art Institute of Chicago and the Pont-Aven School of Contemporary Art with a Brown and RISD summer-abroad program. She graduated from Union College in 2009 with a BA in anthropology. Her academic background in environmental anthropology continues to directly influence her art. The artist also did environmental work with Tasmanian National Parks and Africa Lion and Environmental Research Trust.

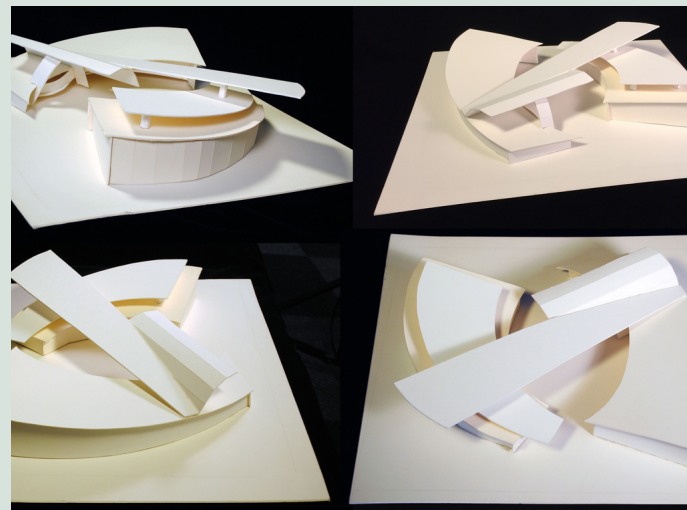
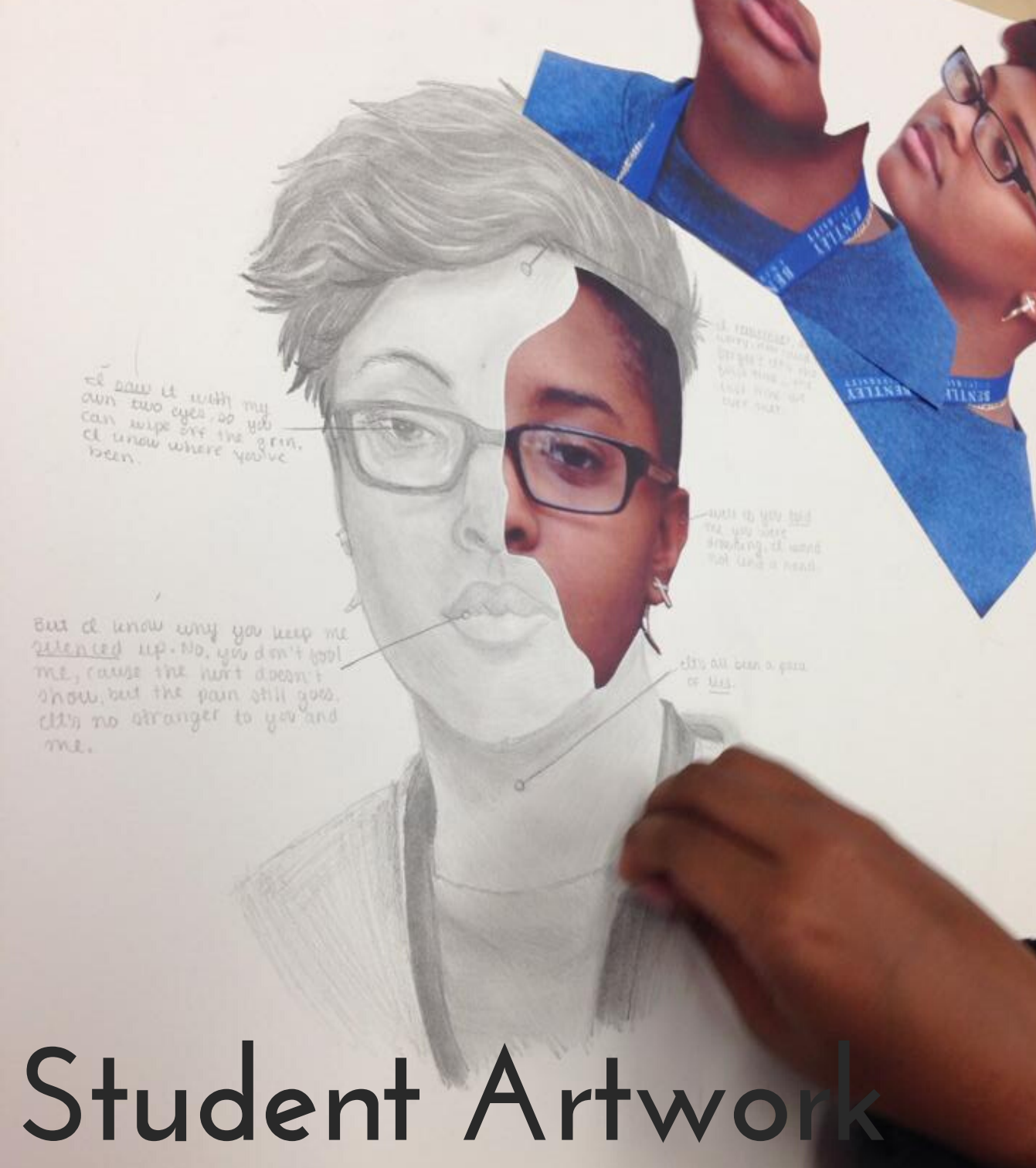
READ MORE



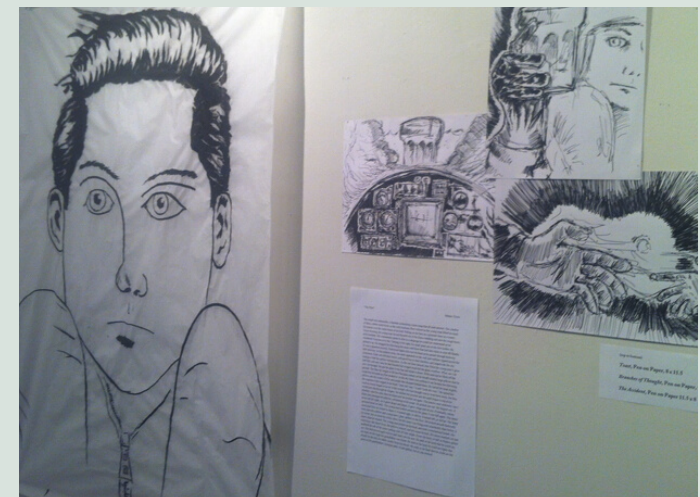
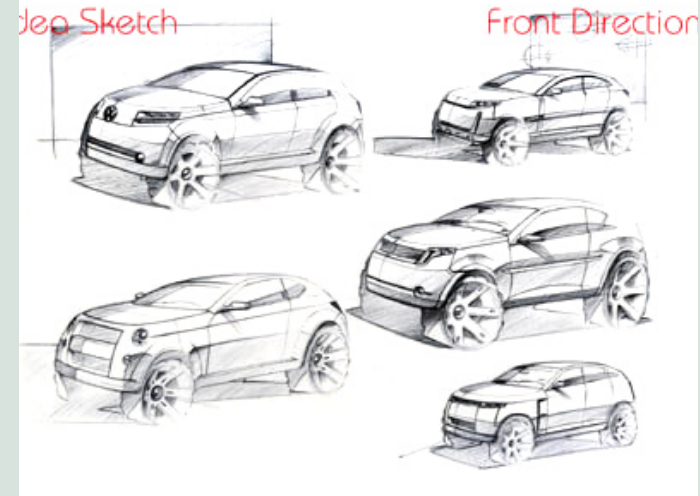
Inman Square Gallery: Provided an innovative forum for contemporary art in Boston and presenting artists whose work transforms consciousness

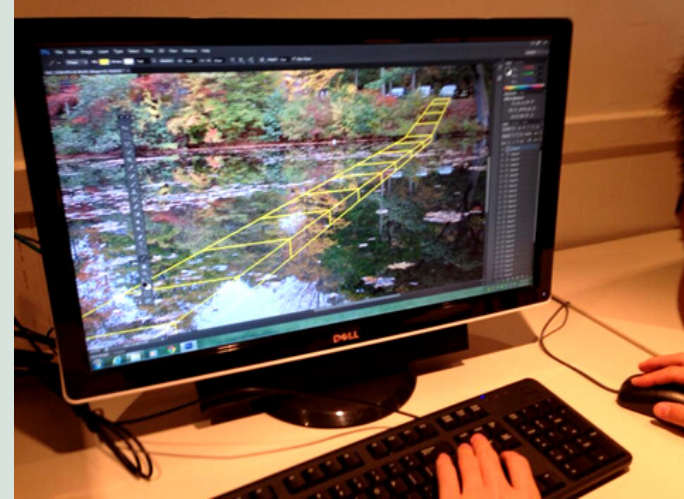
READ MORE



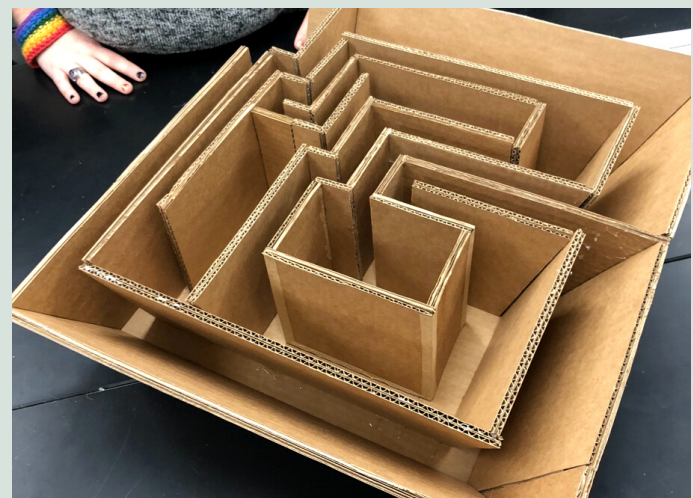


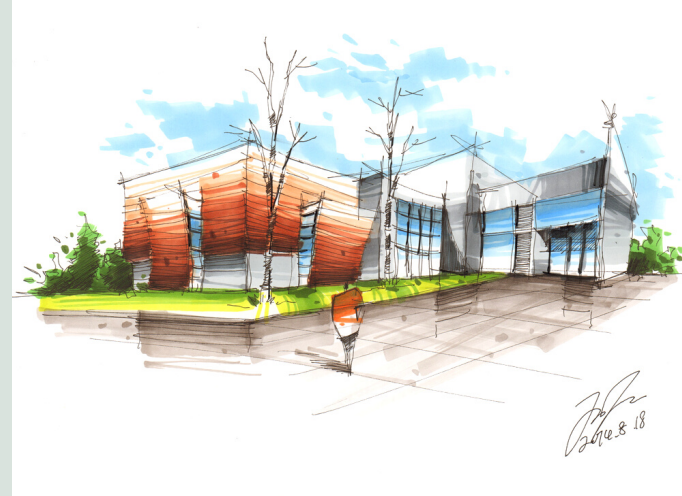
Student Artwork

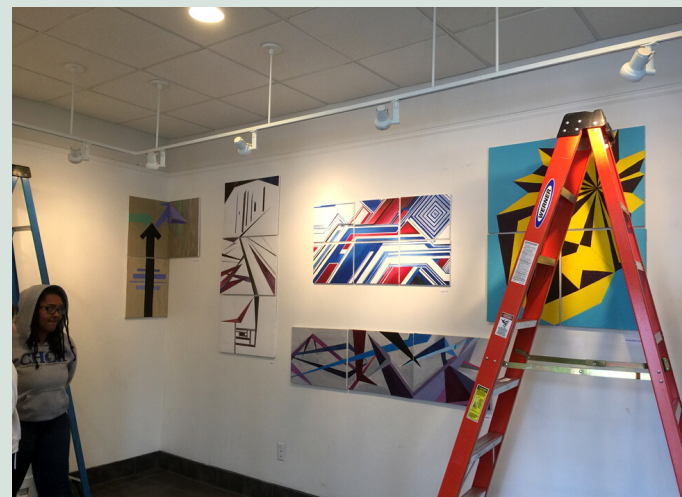






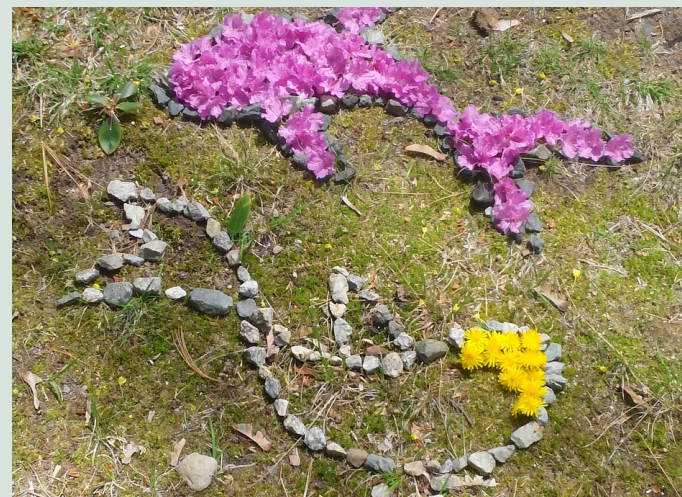


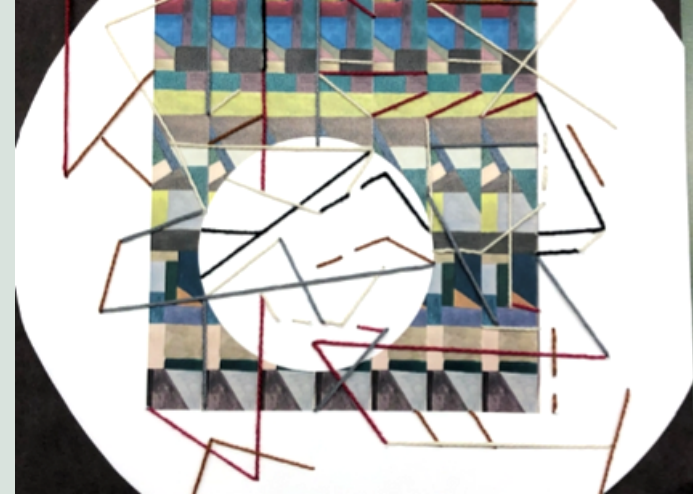
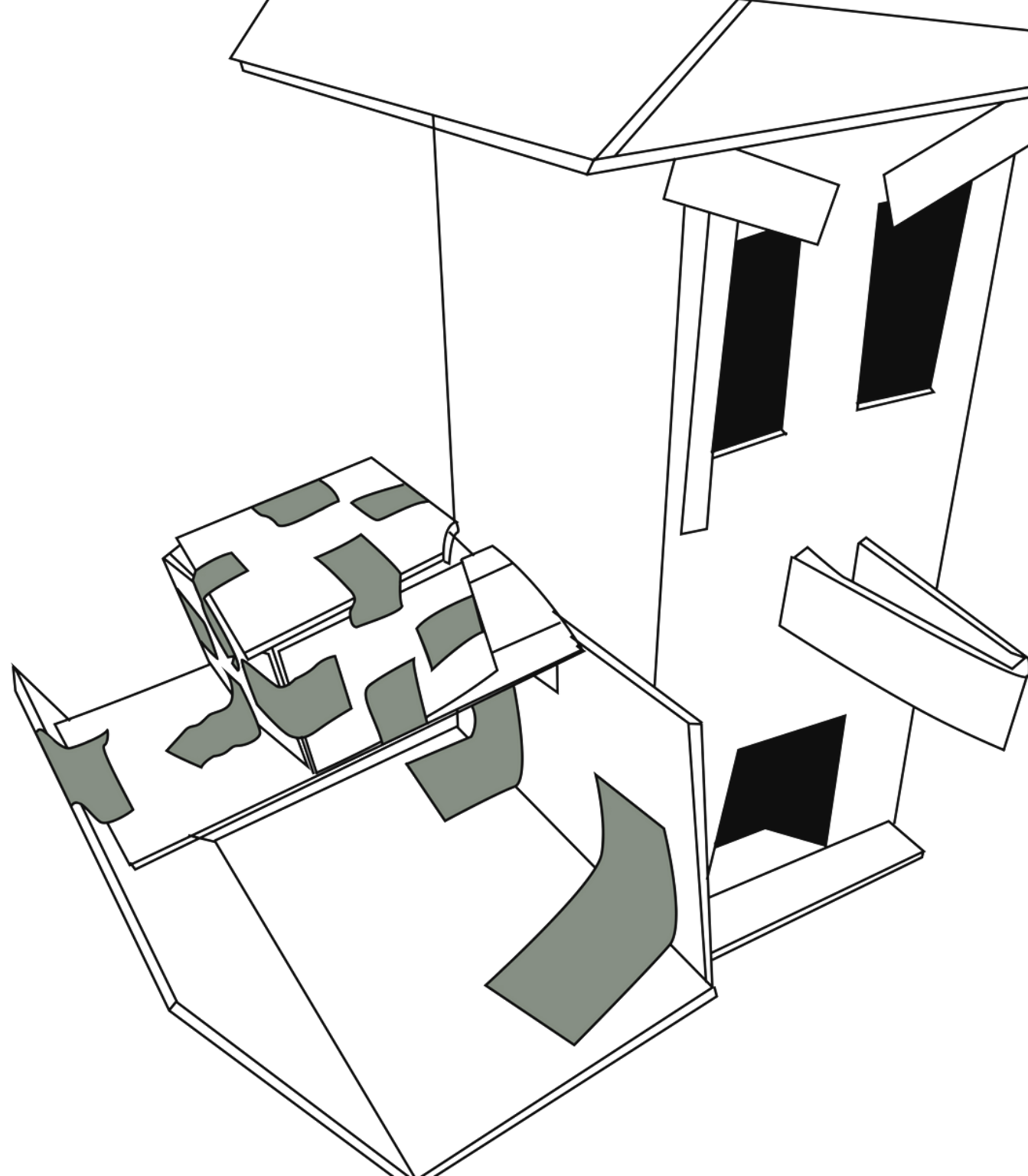




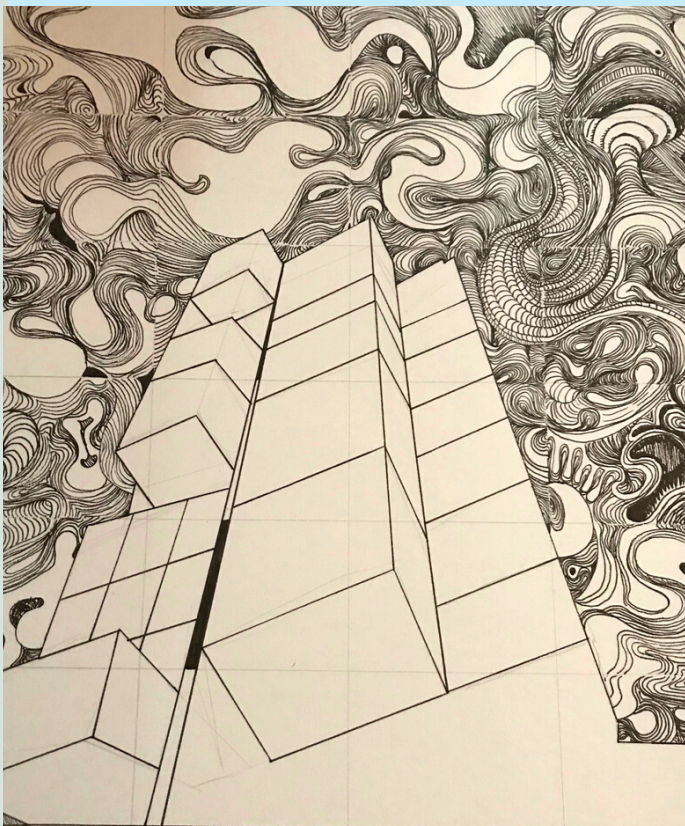
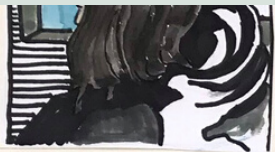














The project below directly relates to stay-home orders and social distancing during Covid 19. Sculpture 1 and 2 students were asked to create Earth (Earthworks) or Land Art or earth-body art/ Homebound Body Art.









